

# NORTHSIDE BEEKEEPERS' ASSOCIATION INC.

PO Box 582 Kallangur 4503

# NEWSLETTER



Find us on 

**October 2015**

**President:** Les Brown - 3283 3480

**Treasurer:** John Batchelor - 3633 0403

**Librarian:** Brian McGregor - 0408 715 447

**Redcliffe Show Delegate:** Dennis Parfitt - 3092 1140 or 0408 769 099

**Redcliffe Show Steward:** Norma Bouveng - 3869 2143 or 0402 647 806

**Equipment Officer:** Kevin Anderson - 0419 121 004

**Editor:** Kevin Anderson - 0419 121 004

**Liaison Officer:** Peter Hughes - 0413 333 820

**Vice-President:** Ian Christie - 3351 1823

**Secretary:** Gina Bourke - 0403 068 705

**email:** nbkanewseditor@gmail.com

**email:** phughes300@gmail.com

**Monthly Meetings are held on the last Tuesday of each month  
at the CWA Hall, 1429 Anzac Avenue Kallangur.**

**Next Meeting: 7:30pm – Tuesday, 27 October, 2015.**

Welcome to all visitors, hope you enjoy the evening. Please stop for a “cuppa” and a chat after the meeting.

## [Agenda Topics](#)

If you would like an item added to the agenda or you have something in particular you would like covered can you please email the Secretary with the details, or print and complete the “Topics for Agenda” at the end of the newsletter and bring it along to the next meeting.

## [Club News](#)

- **Annual membership fees:** are due at the end of January. If have not yet renewed your membership, please see Peter Hughes at the next meeting.
- **Badge Orders:** Please pickup badges if not already done so, cost \$5.00. Please see John Batchelor.

## [Library News](#)

The Library is a wealth of information for members of all skill levels. All members are encouraged to make use of this most valuable resource. Please see Brian before borrowing items.

## [“In the Apiary”](#) by Robin Harwood

*These field days will be held on the Saturday morning following the monthly meetings starting at 9:00am at 17 Michelle St Bellmere. Please bring along gloves, veil/suit and a water bottle.*

*If you are unable to attend the monthly meeting please contact **Peter Hughes** to ensure that the field day is on.*

# ***NORTHSIDE BEEKEEPERS' ASSOCIATION INC.***

## **Dates of Upcoming Meetings:**

24 November, 2015

## **Membership Draw**

A Membership Draw will be held following the conclusion of the formal proceedings of the monthly meetings. You must be a NBKA member and present on the night to claim the prize.

The last membership draw was won by Karl Hamdan.

## **New Members**

Reminding all new members of our buddy system where new members can be linked up with a mentor to help them with all the beekeeping nuances that we have all experienced when we first started.

Mentors are willing and wanting to help, so please give Peter Hughes a call and he will link you up with someone in your area.

## **Aspiring Mentors**

If you are an experienced beekeeper and keen to help out new members please give Peter Hughes a call and he will add you to our mentor register.

## **Club Land at Lake Samsonvale**

We have been directed by SEQWATER that all members and visitors who visit the club's land, either to maintain their own hives or to attend the club field days must complete an induction program.

All members are asked to complete the induction by following the instructions in the attached document (Please contact the editor for a copy of this document).

<https://seqwater.sabanow.net/Saba/Web/Cloud>

Please enter **Northside Beekeepers Association** in the Company Name

The land allocated to the club is located at:

- Gate Number 67 off Whiteside Road, Petrie
- Gate Number 41 off Postman's Track, Samsonvale

If you want to put hives on the Petrie site, please contact the Petrie Site Manager Lawrence Bouveng (3869 2143 or 0432112371) or see Peter Hughes or Ian Christie for the Postman's Track site.

## **Progressive Beekeeping Day held on 11th October.**

A great day and a huge thank you to John, Lawrence, Norma and Brian for allowing us to visit your apiaries. Almost half of the club membership attended the sessions, which reinforces that we have a strong active club whose members are keen to learn and to pass on knowledge gained.

Members can go to the following link to view the many photos taken on the day by Nadine. You do not require to have a Facebook account to view this page:

<https://www.facebook.com/Northside-Beekeepers-Association-Inc-1723072327914007/>

# ***NORTHSIDE BEEKEEPERS' ASSOCIATION INC.***

## **Club Shirts.**

The club is looking at purchasing a number of shirts with the clubs logo and name embroidered. The cost to members would be around \$30.

This will be discussed at the October meeting.

## **Needle Out Polo**

### **2NOP**

From course to clubhouse.



#### **Details**

- 65% Polyester for durability, and 35% Cotton for comfort
- 190gsm textured self-stripe pique knit fabric
- Contrast colour placket
- Knitted collar features herringbone tape on inside back neck
- Drop tail hem with reinforced herringbone side splits

#### **Sizing**

<b>ADULTS</b>	<b>S</b>	<b>M</b>	<b>L</b>	<b>XL</b>	<b>2XL</b>	<b>3XL</b>
<b>CHEST</b>	53.5	56	58.5	61	63.5	66.5
<b>SP LENGTH</b>	70	72.5	75	77.5	80	81

# NORTHSIDE BEEKEEPERS' ASSOCIATION INC.

## Mead Recipe

- 4 Litres Rain Water
- 1 Litre Honey
- 1 Litre Cold Black Tea (made from 6 tea bags) - must be cold or it will kill the yeast
- 1 Satchel Yeast + fruit or spices of your choice

Mix up and process as usual - When it stops bubbling; bottle it and then put in the fridge to kill the yeast.

=====**end of mead recipe**=====

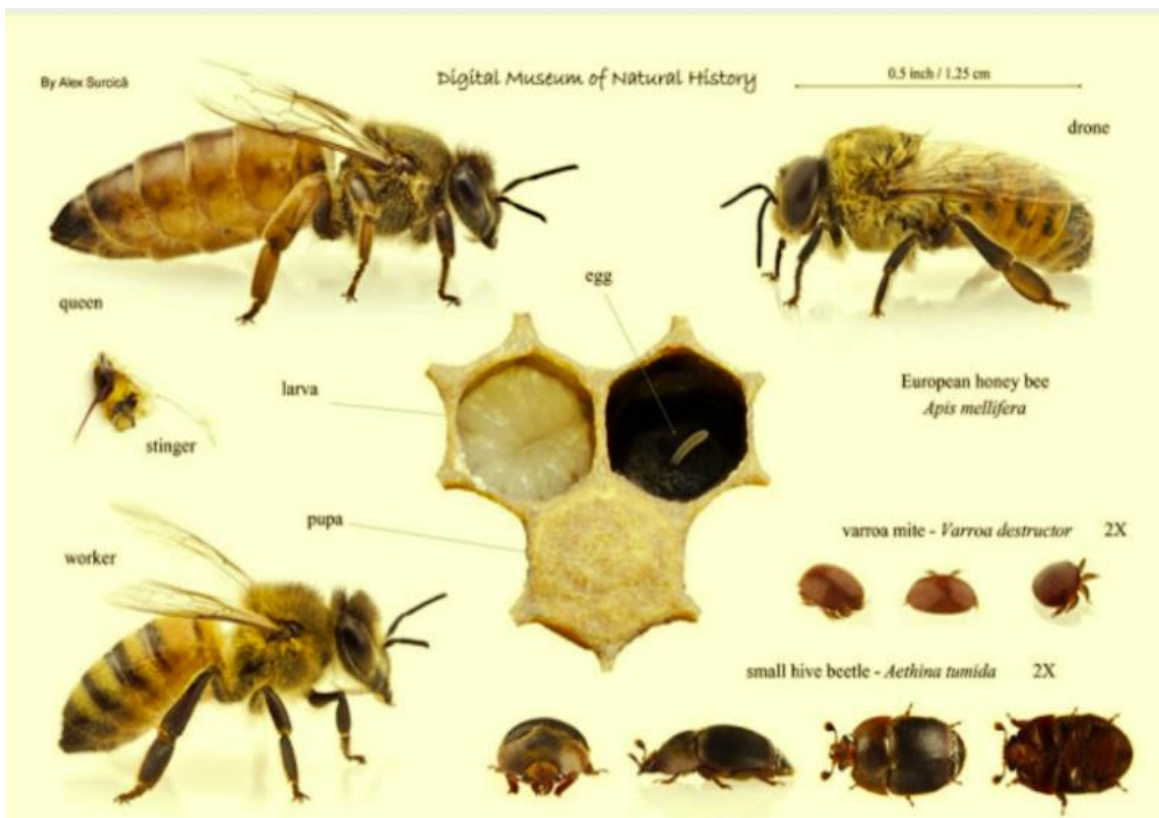
## Bee Facts

Member's contributions to the section are both encouraged and welcomed. If you wish to submit a piece for a newsletter please email it to the news editor at [nbkanewseditor@gmail.com](mailto:nbkanewseditor@gmail.com).

Bee development

Find us on 

Type	Egg	Larva	Cell capped	Pupa	Emergence	Start of Fertility
Queen	until day 3	until day 5½	until day 7½	until day 8	from day 16 on	approx. 23rd day
Worker	until day 3	until day 6	until day 9	until day 12	from day 21 on	N/A
Drone	until day 3	until day 6½	until day 10	until day 14½	from day 24 on	approx. 38th day



=====**end of bee facts**=====

# **NORTHSIDE BEEKEEPERS' ASSOCIATION INC.**

## **Bee Calendar**

October	<p>Days are getting warmer and longer, Queen is producing more eggs, brood is increasing, bee numbers are increasing.</p> <p>Likelihood of bees raising queen cells for swarming is increasing.</p>	<p>Inspect colony at nine day intervals for queen cells to prevent swarming</p> <p>If there is a honey flow and only if bees require it add a super for honey collection</p> <p>Re-Queen if desired</p>	<p>The warmer weather and good springtime pollen supplies will trigger the swarm instinct.</p> <p>Keep an eye out for increasing drones - this is a sign of impending swarming</p>
November	<p>Daylight hours are extending, Queen is producing eggs at her peak of the season, brood nest is thriving, bee numbers are growing.</p> <p>Likelihood of bees raising queen cells for swarming if they have not already swarmed.</p>	<p>Inspect colony at nine day intervals for queen cells to prevent swarming</p> <p>If there is a honey surplus, collect it from your hive</p> <p>Add a super for honey collection if required</p>	<p>The warmer weather and good springtime pollen supplies encourage bees to make new colonies</p>
December	<p>Daylight hours are long and the weather is warm. Queen egg production is at peak, brood nest is large and bee numbers are still increasing.</p> <p>The likelihood of queen cells being raised for swarming decreases</p>	<p>Inspect hives at 2 week intervals to prevent swarming</p> <p>If there is a honey surplus, collect it from your hive</p> <p>Add a super for honey collection if required</p>	<p>The warmer weather and good springtime pollen supplies encourage bees to make new colonies</p>

===== end of calendar =====

# **NORTHSIDE BEEKEEPERS' ASSOCIATION INC.**

## **Know our trees**

Member's contributions to the section are both encouraged and welcomed. If you wish to submit a piece for a newsletter please email it to the news editor at [nbkanewseditor@gmail.com](mailto:nbkanewseditor@gmail.com).

A good book on how to identify local gum trees is available from the Moreton Shire Council web site.

<https://www.moretonbay.qld.gov.au/uploadedFiles/common/forms/environment/Gumtree-Identification-Booklet.pdf>

So, what should be in bloom in the coming months?

➤ Dogwood – little nectar, good pollen	July to October
➤ Citrus - Good nectar, good pollen	July to October
➤ Avocado - medium nectar, medium pollen	July to November
➤ Stone fruitd - Poor nectar, Poor pollen	July to October
➤ Scribbly gum – Light nectar, very little pollen	July to November
➤ Wattle – no nectar but some pollen	June to November
➤ Spotted Gum - Major source of pollen, good nectar	May to October
➤ Narrow leaved red ironbark – Good nectar, good pollen	July to December
➤ Grey Ironbark – no pollen, good nectar	June to January
➤ Jellybush/Wild May – Good pollen and nectar	August to November
➤ Grey Gum – fair pollen adn nectar	September to December
➤ Swamp Yellow Stringybark – Good pollenand nectar	September to February
➤ White Mahogany/Yellow Stringybark Good pollen, fair nectar	October to December
➤ Clover – Good pollen and nectar	August to December

The above flora 'calendar' is dependant on where you live and climate variations.

Feedback from flora experts is encouraged to help ensure our 'calendar' is as accurate as possible.

Follow the link below to download this RIDC publication "**Bee Friendly - A planting guide for European honeybees and Australian native pollinators**"

<https://www.google.com.au/url?sa=t&rct=j&q=&esrc=s&source=web&cd=2&cad=rja&uact=8&ved=0CCcQFjAB&url=https%3A%2F%2Frirdc.infoservices.com.au%2Fdownloads%2F12-014&ei=AXZ1VZPPOaTGmAXhI4GoCA&usq=AFQjCNHcjxqatABWYkO91GIPmSeei2ZcQw>

## News Articles

Member's contributions to the section are both encouraged and welcomed. If you wish to submit a piece for a newsletter please email it to the news editor at [nbknewseditor@gmail.com](mailto:nbknewseditor@gmail.com).

### Australian Honey Bee Industry Council June Newsletter

<http://honeybee.org.au/wp-content/uploads/2015/10/September-2015.pdf>

===== end of article=====

## Research Projects RIRDC

### Project Details

[BACK TO RESEARCH PROGRAM](#)

#### Reducing the impact of Nosema and viruses by improving honeybee nutrition

Summary	<p>Nosema (<i>N. apis</i> and <i>N. ceranae</i>) and viruses contribute significantly to the pathogen load of honeybee colonies but their cryptic nature leaves them largely unmanaged by beekeepers. The current RIRDC project PRJ-8450 found a high prevalence of Nosema and viruses across Australia, particularly during almond pollination. Better management of Nosema and viruses is needed to minimise their impact on hive productivity and pollination activity. This project will deliver improved management of these important pathogens in two ways. Firstly, by testing the influence of different autumn floral types and an autumn pollen feeding strategy to reduce levels of <i>N. apis</i>, <i>N. ceranae</i> and viruses during almond pollination. Secondly, by directly testing the effects of pollen on virus infections using lab infected honeybees in experimental cages. This project is a logical extension of previous studies on Nosema and viruses, which is needed to address ongoing issues with these pathogens.</p> <p>To demonstrate whether improved autumn nutrition can reduce pathogen loads during almond pollination I will conduct a field experiment in collaboration with 5–10 commercial beekeepers from SA, VIC and NSW involved in almond pollination. Hives using different autumn floral types and given pollen supplements will be compared for pathogen load and honey yield. Pathogen loads of individual hives will be quantified at pre-treatment in Feb 2016 and post-treatment at winter shutdown in May, pre-almonds in Aug, post-almonds in Aug, and post-canola in Oct. Honey yields will be determined in Dec 2016. I hypothesise that improved management of autumn nutrition can deliver reduced pathogen loads in late winter and benefit pollination hives. To investigate the effects of pollen on virus infection I will use lab assays to provide adult bees with pollen and experimentally infected them with sacbrood virus, with the hypothesis that pollen fed bees will have reduced virus infections.</p>
Program	Honey Bee
Research organisation	CSIRO
Objective summary	<ol style="list-style-type: none"><li>1. Demonstrate the effects of autumn nutrition on hive pathogen loads in late winter</li><li>2. Determine the effects of pollen intake on virus replication in honeybees</li></ol>
Project Stage	Current
Project start date	Saturday, August 01, 2015
Project completion date	Thursday, November 30, 2017
Journal articles from project	Not Available
National priority	Safeguarding Australia
Rural priority	Biosecurity
RIRDC goal	HBE-Reduce the incidence and impact of pests and diseases on the beekeeping and pollination services industries

[http://www.rirdc.gov.au/research-project-details/custr10\\_HBE/PRJ-009987](http://www.rirdc.gov.au/research-project-details/custr10_HBE/PRJ-009987)

===== end of article=====

## Project Details

[BACK TO RESEARCH PROGRAM](#)

### Honey Bee and Pollination Program communications 2015-18

Summary	<p>Cox Inall Communications will provide communication services for the Honey Bee and Pollination Program .</p> <p>Activities would include media releases, feature articles and fact sheets, along with any other tools and channels that became apparent during the course of the contract and as required depending on the research outcomes.</p> <p>At the beginning of each 12 month period, a meeting would be held with RIRDC and HAL to review continuing pollination research and projects soon to begin. This would allow the development of an annual Implementation Plan with more precise activities and timing outlined for feedback and approval.</p>
Program	Honey Bee
Research organisation	Cox Inall Communications
Objective summary	<p>The objective of this project is to support the work of the Honey Bee and Pollination Program by communicating the outcomes of research which helps to secure the pollination of Australia's horticultural and agricultural crops and honey production into the future on a sustainable and profitable basis.</p> <p>This will help to ensure those outcomes are widely adopted by the honeybee industry and pollination dependent plant industries, and that both plant industries and the Australian community are educated about the importance of pollination services.</p>
Project Stage	Current
Project start date	Monday, June 01, 2015
Project completion date	Wednesday, May 30, 2018
Journal articles from project	Not Available
National priority	An environmentally sustainable Australia
Rural priority	Innovation skills
RIRDC goal	HBE-Promote extension, communication and capacity building

[http://www.rirc.gov.au/research-project-details/custr10\\_HBE/PRJ-009819](http://www.rirc.gov.au/research-project-details/custr10_HBE/PRJ-009819)

===== end of article=====

## **Research Project – University of Sunshine Coast**

Published on 12 October 2015

A sticky substance produced by native Australian bees has been identified as having a unique chemical profile that could hold the key to a medical breakthrough in how wounds are treated, according to new research at the University of the Sunshine Coast.

In a world research first, USC Biomedical Science PhD student Karina Hamilton has studied the cerumen produced by stingless Australian bees to explore possible medical properties.

“There’s been significant research done in this field with European honey bees and the health benefits there are well known, but there had never been any research carried out with Australian bees,” said Ms Hamilton of Hervey Bay.

The PhD student found that the cerumen from Australian stingless bees possessed up to 180 different chemical compounds, and was chemically different to the resin, or propolis, produced by the European honey bee.

“It was an extremely onerous task to extract the raw material and isolate the four components that possessed wound-healing, anti-oxidant and anti-inflammatory characteristics,” she said.



# ***NORTHSIDE BEEKEEPERS' ASSOCIATION INC.***

“To be able to confirm that Australian stingless bees do create cerumen with these properties was very exciting and the cell-based model research was very promising.”

Ms Hamilton also spent 10 months of her PhD working in labs at Cardiff University in the United Kingdom to investigate specific in vitro assays (investigative procedures).

Senior USC lecturer in Biochemical Pharmacology Dr Fraser Russell supervised Karina and said the overseas research time was a fantastic opportunity.

“To have the equipment and expertise to support the very specific work she was carrying out was vital for this research,” he said.

Dr Russell and Ms Hamilton are now looking for available grants to support further research.

“The next step for this project would be to look at human trials to involve the application of either the extract or the chemical constituents on superficial wounds to see if that might hasten wound healing in patients,” Dr Russell said.

Ms Hamilton’s research was made possible by a \$75,830 grant over three years from the Australian Government’s National Health and Medical Research Council and through support from USC’s Inflammation and Healing Research Cluster.

— Megan Woodward

<http://www.usc.edu.au/explore/usc-news-exchange/news-archive/2015/october/research-identifies-aussie-bee-potential>

===== end of article=====

## **Argentine Ants Carry Virus Deadly to Honeybees**

The [Argentine ant](#), already known as one of the world’s most widespread and damaging pests, may be infecting [honeybees](#) with a deadly virus, a new study finds. Alexandra Sebastien, a biologist at Victoria University of Wellington in New Zealand, analyzed Argentine ant populations in New Zealand, Australia and Argentina as part of her doctoral research.

She and her colleagues found that ants from all three locations [can carry the deformed wing virus](#), a pathogen linked to colony collapse in honeybees. The new study appears in the current issue of the journal *Biology Letters*.

Argentine ants have flexible diets that [allow them to thrive in many climates and on multiple continents](#). They eat other ants and insects, but also prey on larger animals like skinks and geckos.

“These ants, when they establish in an area, they become very widespread and they forage in the same places as bees,” said Phil Lester, a biologist at Victoria University of Wellington and a co-author of the new study.

The researchers also discovered that some Argentine ants carry a second virus that could be useful in controlling the ants. “It could save us from utilizing large amounts of pesticides,” Dr. Lester said.

[http://www.nytimes.com/2015/09/15/science/argentine-ants-carry-virus-deadly-to-honeybees.html?smid=fb-share&\\_r=2](http://www.nytimes.com/2015/09/15/science/argentine-ants-carry-virus-deadly-to-honeybees.html?smid=fb-share&_r=2)

===== end of article=====

**I just love a good bee story**

[http://www.honeybeesuite.com/the-bee-thirsty-a-mini-shop-vac/?utm\\_source=feedburner&utm\\_medium=email&utm\\_campaign=Feed%3A+HoneyBeeSuite+%28Honey+Bee+Suite%29](http://www.honeybeesuite.com/the-bee-thirsty-a-mini-shop-vac/?utm_source=feedburner&utm_medium=email&utm_campaign=Feed%3A+HoneyBeeSuite+%28Honey+Bee+Suite%29)

---

---

*end of article*

---

---



**Fluoro pollen to track bees and insects at work in macadamia orchards**

Scientists are dusting macadamia flowers with fluorescent powders to track the movements of insects that are pollinating an orchard near Bundaberg in Queensland. The research will provide greater information about what is pollinating macadamias and how pollination requirements can vary between macadamia varieties.

Read the full article at <http://www.abc.net.au/news/2015-09-18/fluoro-pollen-tracks-bees/6784808>

---

---

*end of article*

---

---



**New guide to help detect and control Varroa mites**

The Honey Bee Health Coalition, a diverse coalition dedicated to improving the health of honey bees and other pollinators, has released a guide aimed at helping beekeepers strengthen hive health by controlling the mite *Varroa destructor*.

[Read more](#)

Read the full article <http://honeybeehealthcoalition.org/hbhc-releases-guide-to-help-beekeepers-detect-control-varroa-mite-infestations/>

---

---

*end of article*

---

---

# ***NORTHSIDE BEEKEEPERS' ASSOCIATION INC.***

## **Interesting Web Sites**

Member's contributions to the section are both encouraged and welcomed. If you wish to submit a web address for a newsletter please email it to the news editor at [nbkanewseditor@gmail.com](mailto:nbkanewseditor@gmail.com).

<https://www.youtube.com/watch?v=FfnefkJSfBs>

<http://www.knowmoreinsixtyseconds.com/#!/video/why-does-our-survival-come-down-to-bees>

<http://io9.com/stunning-photos-show-the-ancient-tradition-of-honey-hun-1538049319>

<https://plus.google.com/communities/114407111815725919768>

<http://www.bbc.co.uk/nature/collections/p007rdq3#p00hhdrw>

[https://www.youtube.com/watch?v=3h4uVVFCvVq&feature=em-Subs\\_digest](https://www.youtube.com/watch?v=3h4uVVFCvVq&feature=em-Subs_digest)

<http://theconversation.com/au/environment>

<http://www.qbi.uq.edu.au/> - University of Queensland, Queensland Brain Institute

[http://nbpsp.planthealthaustralia.com.au/public.php?page=pub\\_home&program=5](http://nbpsp.planthealthaustralia.com.au/public.php?page=pub_home&program=5) - National Bee Pest Surveillance Program

<https://www.youtube.com/user/scishow> - Any you tube video by SciShow.

<http://www.honey.com> - This is a USA website.

[www.honeybeesuite.com](http://www.honeybeesuite.com) - This is a US website, and a really good one. You can subscribe for free and join in the conversation. I have emailed the author Rusty, and have permission to republish any articles I find interesting in our newsletter. Thank-you Rusty.

[www.bluebees.com.au](http://www.bluebees.com.au) – a Victorian beekeeper has devised a new bottom board referred to Bluebees Board. Maybe the club can buy one for one of the club's hives as a trial and assessment for the benefit of our members.

<http://www.rirdc.gov.au/research-programs/animal-industries/honeybee> - Australian Government site

===== end of web sites =====

## **Recipes**

Member's contributions to the section are both encouraged and welcomed. If you wish to submit a recipe for a newsletter please email it to the news editor at [nbknewseditor@gmail.com](mailto:nbknewseditor@gmail.com).

### **Honey Pumpkin Muffins**



- 1-1/2 cups - all-purpose flour
- 1-1/2 teaspoons - baking powder
- 1 teaspoon - baking soda
- 1/4 teaspoon - salt
- 1-1/2 teaspoons - ground cinnamon
- 1/2 teaspoon - ground ginger
- 1/4 teaspoon - ground nutmeg
- 1/4 cup (1/2 stick) - butter or margarine, softened
- 3/4 cup - honey
- 1 - egg
- 1 cup - solid-pack pumpkin
- 1 cup - chopped toasted walnuts

In medium bowl, combine flour, baking powder, baking soda, salt, cinnamon, ginger and nutmeg; set aside. Using an electric mixer, beat butter until light; beat in honey, egg and pumpkin. Gradually add flour mixture, mixing until just blended; stir in walnuts. Spoon into 12 greased or paper-lined 2-1/2 inch muffin cups. Bake at 350°F for 25 to 30 minutes, or until toothpick inserted in center comes out clean. Remove muffins from pan to wire rack. Serve warm or at room temperature.

===== end of recipe =====

# ***NORTHSIDE BEEKEEPERS' ASSOCIATION INC.***

## **Slow Cooker Honey Sweet & Sour Chicken with Crushed Red Pepper and Caramelized Onions**

*(Recipe courtesy of Marie Simmons, cookbook author.)*



- 3 pounds (about 8) large - bone-in chicken thighs, skin and fat removed, rinsed and patted dry
- Coarse salt and freshly ground black pepper
- 1/2 cup - tomato sauce
- 1/4 cup - honey
- 1/4 cup - apple cider vinegar
- 1/2 teaspoon - crushed red pepper
- 2 tablespoons - extra virgin olive oil
- 2 cups - onions, thin lengthwise slices

Spray the insert of your slow cooker with non-stick cooking spray.

Lightly season both sides of the chicken thighs with salt and pepper. Place the pieces in the slow cooker. In a bowl stir the tomato sauce, honey, vinegar and red pepper until blended. Pour over the chicken.

Cover and cook the chicken on low until the chicken is cooked through, 3 to 4 hours, depending on your slow cooker. Lift the cooked chicken from the juices and place in an oven proof serving dish. Cover with foil and keep warm in a low oven. Reserve the juices. There will be 1 to 2 cups.

Meanwhile heat oil in a medium skillet until hot enough to sizzle a piece of onion. Add the onion and cook, stirring occasionally, over low heat, until the onions are golden, about 15 minutes. Add the reserved juices and gently boil until reduced by about half. Spoon the onion mixture over the chicken and garnish with the parsley or oregano.

<https://mail.google.com/mail/u/0/#inbox/1502a26b6cf52294>

=====  
end of recipe  
=====

**Honey Pot Cider**



- 1-1/4 cup - apple cider
- 1 Tablespoon - Orange Blossom honey
- 1 pinch - cinnamon
- 1-3/4 oz. - Apple Jack brandy
- 1 - cinnamon stick
- 2 - apple slices

Combine the apple cider, honey and cinnamon in a small saucepan and stir over medium heat for about 5 minutes or until heated through. Stir in the Apple Jack brandy and pour the cider into a mug.

With the tip of a small knife, pierce small holes in the apples and string them onto a cinnamon stick. Place the garnish across or in the cider.

<https://mail.google.com/mail/u/0/#inbox/1502a26b6cf52294>

===== end of recipe =====

# ***NORTHSIDE BEEKEEPERS' ASSOCIATION INC.***

## **Club Equipment**

The following items can be borrowed by club members free of charge:

- 2 frame stainless steel extractor,
- 2 frame plastic extractor,
- 2 piece plastic uncapping bin with honey gate (+ *VIP wood with nail in*),
- 1 x electric knife,
- 1 x steam knife,
- Frame Assembly Jig (Built and donated by John Batchelor)

These items are light and should fit in many mid to large car boots.

**It is the responsibility of members to ensure that all items are cleaned thoroughly prior to returning same to the Equipment Officer.**



# ***NORTHSIDE BEEKEEPERS' ASSOCIATION INC.***

## **Items for Sale/Wanted**

If you wish to submit items for Sale/Wanted for inclusion free of charge in our newsletter please email all details to the news editor at [nbkanewseditor@gmail.com](mailto:nbkanewseditor@gmail.com).

## **Wanting to Buy**

- Les Brown will buy your wax so please contact Les on(07) 3283 3480
- Les Brown requires a 1000+ltr milk vat to store some honey. If you have one or know someone who is willing to sale it, please contact Les on (07) 3283 3480
- 2nd Hand Copy of "The Bee Book" by Peter Warhurst. - Please contact Greg North - 0417 796 306
- A working full depth bee hive.- please contact Peter on 0407 485 282



# **TOPICS FOR AGENDA**

---

In order for us to make our monthly meetings as informative and interesting as possible; please tell us what topics you would like to be covered:-

General Beekeeping – If so – please provide specific details:

-----  
-----  
-----

Queen Raising

Bee Problems/Diseases

Other Topics:

-----  
-----  
-----

The Club boasts a lot of experienced members and we'd like you to share your knowledge. Is there a topic you would like to present at the monthly meetings in the near future or would you like to nominate someone to speak? If so, please give some details:-

Name: \_\_\_\_\_

Topic: \_\_\_\_\_

Meeting:    March    April    May    June    July    August    Sept    Oct

# ***NORTHSIDE BEEKEEPERS' ASSOCIATION INC.***

## **Next Meeting's Agenda**

### AGENDA GENERAL MEETING OCTOBER 27 2015

- DECLARE MEETING OPEN
- WELCOME NEW MEMBERS & VISITORS – REMIND ALL TO FILL IN BOOK & BUY RAFFLE TICKETS
- ATTENDANCE APOLOGIES
- CONFIRMATION OF MINUTES OF PREVIOUS MEETING –  
Moved/Seconded/Adopted
- BUSINESS ARISING FROM PREVIOUS MINUTES –Moved/Seconded/Adopt
- INWARD AND OUTWARD CORRESPONDENCE – Moved/Seconded/Adopt
- TREASURERS REPORT - Moved/Seconded/Adopt
- FLORA REPORT
- LES BROWN TALK ON TOP & BOTTOM LIDS and FEEDING OF BEES
- MEMBER SPOTLIGHT – FERGUS HANLEY
- PROGRESSIVE BEEKEEPING DAY REPORT – JOHN BATCHELOR
- FACEBOOK REPORT – KEVIN ANDERSON
- LIAISON OFFICER'S REPORT – PETER HUGHES
- ROBIN'S FIELD DAY – 31<sup>st</sup> OCTOBER 2015 – 9.00am SHARP – PROTECTIVE GEAR
- GENERAL BUSINESS & BEE PROBLEMS
- DRAW RAFFLES
- CLOSE CLUB MEETING & PROCEED TO AGM.