

# THE BUZZ



Issue No 381 – July 2016

*The official newsletter of the Gold Coast Amateur Beekeepers Society Inc. est 1979*

---

## President's report for July

What a great Mudgeeraba show, a big thanks to the new committee of the show society that produced a great show and our new position near the entry from the car park. I can boast we had the best year in sales and new member's inquiries ever. Society members did particularly well in the honey judging. Get ready for some competition at our Open Day from the folks from Ipswich and Northern Rivers clubs.



With all that behind us we have an exciting month ahead with several plans in place ranging from workshops to schools for new members learning the art of Beekeeping. I hope that we can all join together and welcome our new members and give them the teaching and ability to eventually work their own hives. Other events will be the Gold Coast Show at the end of August. We have already booked our stall position. There will also be other social events occurring around the Gold Coast City Council area. All members will be informed of these events closer to their dates.

At the beginning of this month DAFF reported an incursion of Asian Honey Bees in Townsville. To date no further of these *Apis cerana* have been found in Townsville. Further examination of the original comb has revealed three (3) more *Varroa jacobsoni* in worker comb making five (5) in total. The *V. jacobsoni* mites detected in Townsville are on Asian bees, *A. cerana*. It is currently believed that these forms of varroa mite do not readily transfer between host species – that is, if the mite is found on Asian bees, it does not readily move to European honey bees. These

Varroa are a different breed to the Varroa Destructor common across much of the world.

On Monday 4 July, 2016 a Movement Control Order for an area of 10kms around the Port of Townsville was issued. Discussions are also being held with local beekeepers. Biosecurity continues to investigate the situation and bait hives maintained at ports are being monitored.

I am looking forward to the next meeting will be held on the 17th July 2016 and will be a general meeting at Dr Cathy Knox's residence in Biggera Waters. As you can read in Upcoming Events an exciting beekeeping time is planned.

**Mudgeeraba Show Report** Thanks to the many members who were able to assist prior to and over the course of Friday, Saturday and Sunday. Many hands made it light work and a very pleasurable



occasion! Our stall really tastefully stood out, aided by the bee kite made by Les and Tom Thomson. Honey sales went well with lots of queries answered and membership enquiries received.

Entries to the Honey Judging were strong and competition fierce. Congratulations to all exhibitors with past President **Alan Betts** again proving his capabilities winning many awards including but not limited to **Champion Honey Exhibitor for the 5<sup>th</sup> consecutive year** as well as **Grand Champion Pavilion Exhibitor**. I am looking forward to Alan sharing his secrets with members prior to the Gold Coast Show at the end of August.



### Fees Due 1 July 2016

It's that time of year again. All fees are due on 1 July 2016. Club fees are still \$35.00 (postal) or \$25.00 (email delivery of Buzz) for July 2016 to June 2017, per single or family membership. You can either pay by cheque at the meeting or post it to our Treasurer. Please complete the Membership Application/Renewal Form included with this newsletter to ensure we have your correct contact details so you continue to receive The Buzz.

<http://gcabs.net.au/wp-content/uploads/2016/06/GCABS-Membership-Application-2016-2017-new-v3.pdf>

**Get to know – Les Thomson (Vice-President)** In 1980 I arrived at a small school to find bees were the childrens' Project Club. I then read all I could before the first robbing when the Dad who said he'd had bees and would give a hand turned up in a Jackie Howe singlet, stubbies and threw a handful of cigarette butts into the smoker to quieten the bees . . . No stings and another example of experience trumping book learning.

Moving around Queensland has allowed me to see different aspects of bees and honey production. I registered as a bee-keeper around 1986 when managing up to thirty hives on country as varied as white clover dairy pastures, mixed forestry and sugar cane-lands. You quickly learn that floral variety does impact honey flavour.

Keeping bees is an ideal family hobby linking children, environment and food production.

**Upcoming Events** Members and interested persons. GCABS has a number of upcoming events. These events represent an opportunity not to be missed to get to know other beekeepers, share experiences and talk about bees and beekeeping with members of the public and visitors.

**13 to 14 July 2016 - Qld Beekeepers' Assn AGM & Conference** Speakers include David Westervelt

### Results :-

**White Honey** 1<sup>st</sup> Michael Bugden 2<sup>nd</sup> Alan Betts;  
**Light Honey** 1<sup>st</sup> Alan Betts 2<sup>nd</sup> Lyle Read 3<sup>rd</sup> Angus Turner;

**Golden Honey** 1<sup>st</sup> Olive Cavanaugh 2<sup>nd</sup> Alan Betts 3<sup>rd</sup> Lyle Read;

**Dark Honey** 1<sup>st</sup> Alan Betts 2<sup>nd</sup> Kevin Bell 3<sup>rd</sup> Tom Thomson

**Honey with Comb** 1<sup>st</sup> Alan Betts 2<sup>nd</sup> Kevin Bell 3<sup>rd</sup> Angi Fullwood

**Creamed Honey** 1<sup>st</sup> Alan Betts 2<sup>nd</sup> Kevin Bell

**Novice (Any Honey Type)** 1<sup>st</sup> John Rockley 2<sup>nd</sup> Michael and Margaret Bugden, High Achievement Angus Turner

**Fine Granulated** 1<sup>st</sup> Alan Betts 2<sup>nd</sup> Kevin Bell 3<sup>rd</sup> Lyle Read

**Course Granulated** 1<sup>st</sup> Alan Betts 2<sup>nd</sup> Kathy Knox 3<sup>rd</sup> Olive Cavanaugh

**Frame of Honey** 1<sup>st</sup> Alan Betts

**Novelty Wax** 1<sup>st</sup> Alan Betts 2<sup>nd</sup> Tom Thomson

**Wax >500gm** 1<sup>st</sup> Alan Betts



**Show Champion:**

**Best Overall Honey Exhibitor** Alan Betts

**Champion Honey Exhibitor** Alan Betts

**Boyle Family Trophy** (David Champion Pavilion Exhibitor) Alan Betts

Thank you members once again for your excellent support of this Society.

**John Rockley**

from Florida USA address on American Foul Brood and controlling SHB.

[www.qbabees.org.au/events/coming-events/](http://www.qbabees.org.au/events/coming-events/)

### 17 July 2016 – GCABS Monthly Meeting

NB - Meetings are regularly held on the 3<sup>rd</sup> Sunday of the month. 10:00am morning tea for 10:30am practical activity.

**1/** Subscription of \$2 at door includes a ticket in the lucky door prize. Attendance book sign-in.

**2/** Donations of prizes for the lucky door prizes are always appreciated.

**3/** Sell your home produce, plants, beekeeping equipment, etc on the new sale table. NB Sellers must make a contribution to the raffle. GCABS takes no responsibility for the quality of items offered for sale.

**4/** Members wishing to purchase equipment on the day please make sure your pre-order it with the equipment officer.

**5/** Please bring a plate to share for morning tea and BYO chair to sit on.

**Agenda :** Bee-ginners talk + hive inspection/general meeting/; presentation by Dr Robyn Holland meeting close 12:30.

**Venue :** **4 Cabarita Street, Biggera Waters.** A sign will be displayed at the property entrance. Please contact the Secretary at [secretary@gcabs.net.au](mailto:secretary@gcabs.net.au) should you have queries.

### 21 August 2016 – GCABS AGM & Mthly Meeting

I understand a number of committee members will not be standing for re-election at this meeting. Members should consider nominating for a position as being a member of the committee is not as hard as it seems. Committee members are able to benefit the Society by way of their work and life experience. Committee membership is an ideal way to get to know other members better and establish helpful contacts in the amateur and commercial beekeeping industry.

Section 11.(3)(b) of the Rules of the Society states completed nomination forms must lodged with the secretary at least 14 days prior to the Annual General Meeting. **Nomination forms are therefore to be with the Secretary by noon on Saturday 6 August 2016.** Nomination forms are attached.

A list of nominations will be published on the GCABS website that evening for your reference.

The venue for the AGM will be advised in the next edition of The Buzz.

### 26 to 28 August 2016 - Gold Coast Show

**NB Honey Competition closes 5 August.**

GCABS displays and honey sales. Gold Coast Turf Club, Bundall.

Please advise Kevin Bell for inclusion on the roster if you are available to assist on 25<sup>th</sup>, 26<sup>th</sup>, 27<sup>th</sup> or 28<sup>th</sup>

August. A number of free entry passes will be provided so first in best dressed.

A honey entry form is included with the Buzz. You may also download the show schedule at

<http://www.goldcoastshow.com.au/arts-crafts-including-20s-competition/>

### 3 September 2016 – Big Green Day Out at

Helensvale Library. Honey sales and learn about bees and GCABS lecture at noon.

**25 September 2016 - GCABS Open Day** GCABS annual Open Day. Show Ground, Mudgeeraba. Principal speaker Des Cannon, Editor, Australasian Beekeeper Journal (ABK). Honey judging, cooking competitions, trade displays and sales, introductory talk and demonstration for interested and potential beekeepers.

### Hive registration and branding

The *Biosecurity Act 2014* requires Queensland beekeepers to register as biosecurity entities.

**If you are a new beekeeper, you must register as a biosecurity entity with Biosecurity Queensland.**

New registrations from 1 July 2016 will be registered as a biosecurity entity under the Act.

If you renewed your registration in March 2016 (i.e. the traditional registration renewal date for beekeepers) it will continue until March 2017, at which time you will be required to register under the new Act.

Registration is an important tool for tracing investigations in the event of a pest or disease incursion. Under the Act, if you keep at least 1 beehive you must register as a biosecurity entity. This replaces the previous requirement to be a registered beekeeper.

The Act allows for an individual, multiple people, or a business to be registered depending on who owns the hives. A registrable biosecurity entity (RBE) is allocated a hive identification number (HIN) and only 1 HIN will relate to each RBE. In most cases, your current brand will become your HIN.

<https://www.business.qld.gov.au/industry/agriculture/niche-industries/beekeeping/registration-branding>

### Upcoming Honey Judging Course

- Have you ever considered being a honey competition judge and/or steward. You will find this a rewarding aspect of the competition and give you the knowledge and skills to judge at clubs and local shows. A need has been identified to insure a continuance of competent judges for honey competitions at clubs and shows.

To enable interested persons to gain the required knowledge and skills I am preparing a course to be conducted later in the year.

The course will involve subjects such as schedules, entries, colour grading, judging specifications and lots more.

Register your interest as a course is being developed to be conducted later this year. There will need to be a small charge to cover course notes, refreshments,



venue hire, etc.

When a sufficient number of people show interest in attending the course a date and venue will be advised.

Contact Ray Goldsworthy (Bayside)

0409 134 526

[lizray74@gmail.com](mailto:lizray74@gmail.com)

## Col Payne's Beekeeping Stories –

**Hives on the Garage Roof.** President Vic Morris called me one night during an ordinary week and asked if I could assist him with a "Bee Job." He explained that he received a call from a lady in Florida Gardens whose Husband who was a Beekeeper had passed away. She wanted to get rid of his beehives.

She said, "I'm not sure how many hives he has because they are located on the flat roof of the Garage." She then said, "Just come and take them away and you can have them."

Vic was expanding his apiary at the time and here was a golden opportunity to get some more bee hives for nothing. I arranged to meet him at the address complete with my trailer in tow loaded with a ladder and plank to lay on the roof, and a couple of spare supers with bottoms and lids plus all my bee gear in the boot.

Vic also arrived in his ute loaded with the same sort of gear plus a couple of spare honey drums. Neither of us had been to the site before and our plan was to take off a couple of boxes of honey frames and take them away and extract them, bring them back and place them on the hives then take the hives away to Vic's home apiary site. We thought we would have it all done in a day and lower the sealed hives that night and remove them.

All good plans are never fulfilled as they were planned, laid or written!

When we got onto the roof we found four doubles and two triple hives with some supers in very poor condition. We assumed that the Old Man, due to his health and age, had not tended the hives for some time. They were still very strong and active, savage and full of honey. We needed more boxes and drums plus time and persistence to complete the task at hand.

Vic and I worked for two days climbing up and down the ladder, removing frames of honey before lowering full boxes of honey down from the roof, while being savaged by the angry bees. For the whole time we were compelled to wear full protective gear including gloves until we got into the safety of our vehicles and took the frames away to extract.

It took us two more days of climbing up and down in full protective gear replacing a couple of brood boxes and preparing the hives before sealing them up and lowering them to ground level on ropes and relocating them to their new home at Vic's place. He then had the task of killing the savage queens and replacing them with young quieter ones

Our old President Vic Morris thanked the grateful Elderly Lady and gave her a nice fresh big bottle of her husband's honey.

## What is flowering in July in SEQ?

### Flora that ceases flowering in June

All June flowering flora continue into the following month or months.

### Flora that flower in July

Black Sheoak, Blue Gum, Brisbane Black Wattle, Brisbane Golden Wattle, Broad-leaved Banksia, Caley's Ironbark, Dusky-leaved Ironbark, Forest Boronia, Glycine, Golden Candlesticks, Grey Ironbark, Mountain Coolibah, Mugga, Paper-barked Tea-tree, River Sheoak, Scribbly Gum, Spotted Gum, Swamp Messmate, Tumble-down Ironbark, White Box.

## Orientation Flight New things on my radar:-

### Did you know:

1. The small hive beetle has 3 pairs of legs behind its head, and its larva is hard to squash. The wax moth has a pair of legs on each segment; its larva is easy to squash.
2. Chalkbrood disease spores can remain viable for at least 15 years.
3. Defences against wax moth infestation are: strong colonies; high bee-to-comb ratios; and young, healthy queens.
4. Wax moths prefer to lay their eggs in dark cracks and crevices around the hive and in unattended comb or comb material.
5. While doing a rope test on diseased larvae, the matter ropes out to about 3 to 5 mm this indicates European Foul Brood. Longer roping suggests American Foul Brood.
6. Why should you not eat ripe bananas near a hive? Ripe bananas have the same smell as alarm pheromone isopentylacetate.
7. The queen is most productive in her first year.
8. Beekeepers are required to mark all hives with the owner's hive identification number (HIN).

**New compressed polystyrene bee hives.** These lightweight but tuff hives are produced in Finland. As expected they have excellent insulation qualities and come with a molded mesh bottom board for



ventilation and a lid without the migratory lids' space above the frames. This should reduce the amount of

burr comb there. Information on these hives may be found at <http://www.australianhoneybee.com.au/polyethylene-bee-hives>;

**Members' Facebook Page** Be 'social' and visit this excellent online resource where we can all share knowledge and learn....This is where you'll find it - <https://www.facebook.com/GCABS.official/>

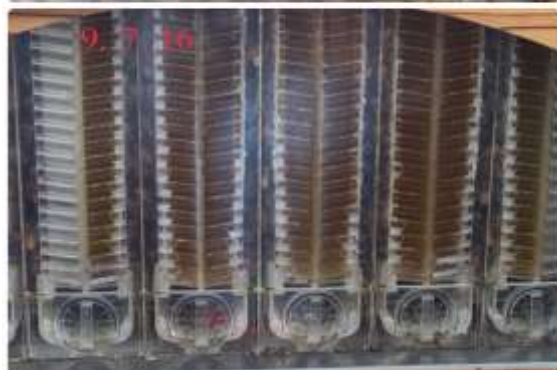
**New Members Mentoring** Any new or existing members interested in beekeeping mentoring (both gaining and providing) please contact Committee Member Kevin Bell who is acting as coordinator. Following is about mentors' assisting with a Flow Hive.

**Library** A large range of books and DVDs is maintained by the Society. See the librarian at the next general meeting or give him a call. Past editions of the Australasian Beekeeper Journal are held. They contain much news and items of interest.

What's in July's **Australasian Beekeeper (ABK)**

- A method for finding an elusive queen
- Cleaning plastic frames
- Beekeeping in NZ
- Understanding the main honey flow
- A closer look at nectar
- A new view on the cause of swarming
- Natural beekeeping with the Warre Hive

**Flow Hive Assistance** Member Maree Smith has a flow hive and has had assistance from club mentors. As advised previously an advanced nuc was supplied and later the Flowhive frames honey super added. Maree's girls are working diligently as shown in the accompanying photos. Note the dates on the images



as to the rapid pace that the girls are storing honey probably due to the abundant flowering paper bark trees in the area. As well the hive is protected from strong winds and the location is not prone to frost. One advantage of the Flowhive that I did not realise until now is the ability to check on honey flow WITHOUT disturbing the hive in the slightest.

**Wintering Bees on the Far North Coast of NSW** Thanks to Brian Window (NRABA) for this article.

Our climatic conditions are quite different from much of Australia, and some of what is written in bee books is not applicable here.

First, how much honey should you leave for the bees? With the shorter days and cooler months, the bees and the queen restrict the size of the brood nest (who knows who makes the decision!), and the bees fill up with capped honey all the comb on each side of the brood nest and around the perimeter of each comb. This is to insulate the brood nest from any cold weather. (In really cold climates, the brood nest will shrink so much that it disappears). So usually the brood box will have a lot of stored capped honey; how much can be gauged by hefting the box.

In our climate and with winter flowering plants, this is probably all they need to survive winter and to expand the hive in spring. So, if you wish you can extract all the honey from the honey supers, provided it is ripe enough (won't shake out and mostly capped). If capped honey is left in the supers, it is highly likely that it will be candied in spring, and difficult to get out. After extracting these frames, there will be a lot of sugar crystals left in the cells, which the bees will discard.

Second, what should you do with the supers and the sticky frames? You can leave one super on the hive if empty, and the bees will look after it over winter. Many beekeepers in our area leave two empty supers on, on the basis that the bees will do a better job of looking after them than they are prepared to do. Certainly, you will be prepared for any winter flowering and the Spring surge. This year, the local red gums are well budded and look like flowering in May, giving good pollen and honey supplies.

Any boxes of stickies off the hive can be stored using refrigeration or fumigation to kill any wax moth eggs or larvae. It can be a periodic treatment e.g. once a month, with the boxes stored sealed up against insects. Wet stickies are more resistant than dry stickies to wax moth, but they can attract small hive beetle. Phostoxin pills are the registered fumigant to control wax moth and small hive beetle, and although quite toxic, are safe if handled properly. The preservation does not have to be perfect, and the bees will repair a surprising amount of wax moth damage. They will also clean up any mouldy combs quickly.

For those who dislike chemicals, open boxes of dry stickies either standing on their end or stacked cross-wise in a well-lit ventilated area apparently do survive. Wax moths like the dark. There are reports on the net that lightly misting the combs with BT (known in Oz as

Dipel, in Yates Natures Way for caterpillars, available at Bunnings) before putting away, kills the larvae with no subsequent effect on the bee larvae (they do not eat the combs).

**COMMITTEE Postal Address ; GCABS, C/- 38 Buccaneer Ct, Surfers Paradise 4217**

President	John Rockley	0427 078 221	president@gcabs.net.au
Vice President	Les Thomson	0403 461 939	les.thomson1@gmail.com
Secretary	Bernice Crisp		secretary@gcabs.net.au
Membership <u>Ast</u> Secretary	Lyle Read	0408 393 938	lsnlyle2@bigpond.com
Treasurer	James Cavanaugh	0429 043 482	treasurer@gcabs.net.au
Equipment	James & Olive Cavanaugh	0429 043 482 0438 643 482	treasurer@gcabs.net.au
Buzz Editor & Librarian	Kevin Bell	0400 794 789	editor@gcabs.net.au
First Aid and Welfare	Olive Cavanaugh	0438 643 482	jim.cavanaugh1@bigpond.com
Committee	Kathy Knox	0403 155 591	k.knox@griffith.edu.au
	Ian Taylor	0409 640 411	
	Kate Miller	0412 883 949	katemiller@ozemail.com.au
	Alan Betts	0414 823 819	07 5533 0792
Master Chef	Bernice Crisp		secranna@optusnet.com.au

# NOMINATION FORM

## Election of Office Bearers and Committee Members

We, \_\_\_\_\_ and \_\_\_\_\_  
*[must be current GCABS Inc members]*

wish to nominate \_\_\_\_\_  
*[name of candidate]*

for the position of *[please tick desired position]*

- President
- Vice President
- Secretary
- Treasurer
- Equipment Officer
- Buzz Editor
- (other) \_\_\_\_\_
- Member of Committee

Signature of Proposer 1: \_\_\_\_\_

Signature of Proposer 2: \_\_\_\_\_

### Consent of Candidate

I, \_\_\_\_\_

am willing to take on this role if I am election to this position at the Special General Meeting of the Association.

Signature of candidate: \_\_\_\_\_ Date: \_\_\_\_\_

In accordance with section 11.(3)(b) of the Rules of the Society this completed form must lodged with the secretary at least 14 days prior to the Annual General Meeting.







# The Gold Coast Amateur Beekeepers Society Inc



www.gcabs.net.au

<https://www.facebook.com/GCABS.official/>

President: John Rockley Ph: 0427 078 221

Secretary: Bernice Crisp Ph: 5591 6117

Treasurer : James Cavanaugh Ph: 0429 043 482

Email: [secretary@gcabs.net.au](mailto:secretary@gcabs.net.au)

## Application / Renewal form & Information about the Society

The Society was formed at a meeting of nine people on 20/09/1979 following an adult education course at the Gold Coast College of TAFE. From the beginning, the main aim of the Society has been to promote the hobby of beekeeping and to provide information and assistance to fellow members and members of the public on the subject of bees.

The main services provided for members are help and support to get the most enjoyment out of beekeeping, distribution of the monthly newsletter (THE BUZZ), hire of honey extracting equipment to members at a nominal fee, supply of beekeeping equipment for sale at competitive prices through our equipment officers and education of members on the subject of beekeeping. Monthly meetings are normally held on the third Sunday of each month and usually take the form of a practical session on beekeeping where everyone is encouraged to become involved.

Our Society maintains a close association with other Amateur Beekeeping Associations, other Organizations within the Beekeeping Industry and the Department Agriculture, Fisheries, Forestry, (DAFF) - Apiculture Section.

NOTE: When you acquire your first bees and hive you must register with DAFF to obtain a Brand for your apiary, (go here - <http://www.daff.qld.gov.au> > Animals > Bees > Beekeeping essentials > Hive registration, read then follow appropriate link). This must also be renewed each year you keep bees.

## Gold Coast Amateur Beekeepers Society Inc. – Application / Renewal 2016/17

Annual Membership fees are \$35.00 (postal) or \$25.00 (email delivery of Buzz) for July 2016 to June 2017, per family. A pro rata membership fee of \$20.00 per family applies if joining after 31<sup>st</sup> December, 2016. Society Badges are available at \$5.00 each.

Name: \_\_\_\_\_

Address: \_\_\_\_\_

Email: \_\_\_\_\_ Phone: \_\_\_\_\_

Names of family members to be included \_\_\_\_\_

Membership: Buzz postal \$35 Buzz email \$25 Pro rata \$20 GCABS Badge \$5

Please enclose your cheque made payable to: Gold Coast Amateur Beekeepers Society Inc. OR deposit direct to: GCABS BSB: 484799 A/C: 000091275

Return this form to the Secretary – details above.

Total payment enclosed: \$ \_\_\_\_\_ Cash Cheque Direct deposit

Paid on Date: Signature: \_\_\_\_\_

Office use only:

<input type="checkbox"/>	<input type="checkbox"/>	<input type="checkbox"/>	<input type="checkbox"/>	<input type="checkbox"/>	<input type="checkbox"/>	<input type="checkbox"/>	<input type="checkbox"/>	<input type="checkbox"/>	<input type="checkbox"/>	<input type="checkbox"/>
--------------------------	--------------------------	--------------------------	--------------------------	--------------------------	--------------------------	--------------------------	--------------------------	--------------------------	--------------------------	--------------------------

Receipt Name Badge Buzz Member No.